

# How to Download and Install Respondus 4.0

Since UConn has a site license for Respondus 4.0, the application is available for free to all instructors. Please note that this software can only be installed on a computer running a Windows operating system.

## Download the software and the installation code

1. Go to the following page on the UConn Software website: <http://software.uconn.edu/respondus/>
2. Scroll down to the **Distribution** heading and click on the **UConn Software – Respondus** link

### Distribution

Respondus is available for faculty & staff only from the new software distribution site. You will be asked for your NET ID & password. [UConn Software-Respondus](#)

3. Enter your **NetID** and password and click the Login button

**Please note:** Only those NetIDs recognized as faculty or staff will be able to access the software download.

NetID

[Don't know your NetID?](#)

Password

[Lost your Password?](#)

Warn me before logging me into other sites.

Login

4. Click on **“Windows”**

Respondus 4.0

Windows

5. Read the Software agreement and accept the terms.

Then click on **“Next”**

I agree to the above terms\*

This is a University owned computer\*

Next

6. Click on **“Download Instructions”** to obtain the PDF with the installation code

Download Instructions

7. Click on **“Download Installation File”** to obtain the .exe file that needs to be installed

Download Installation File

**Please note:** You must have admin rights on your computer to install the software properly.

## Install the software

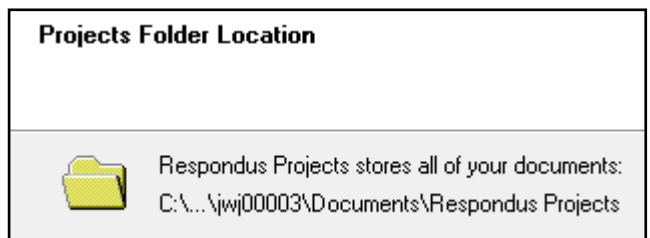
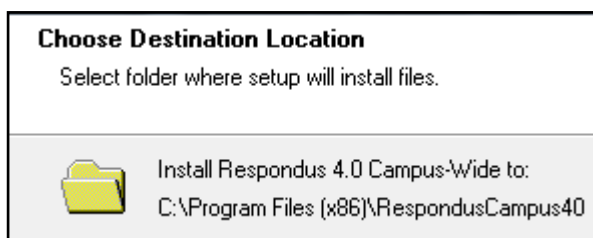
1. Find and double click on the downloaded Respondus.exe file to start the installation

2. Accept the terms of the license agreement.

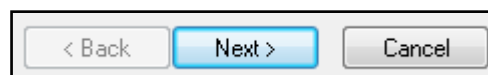


3. Follow the prompts

4. Accept the default locations for the application and project folders



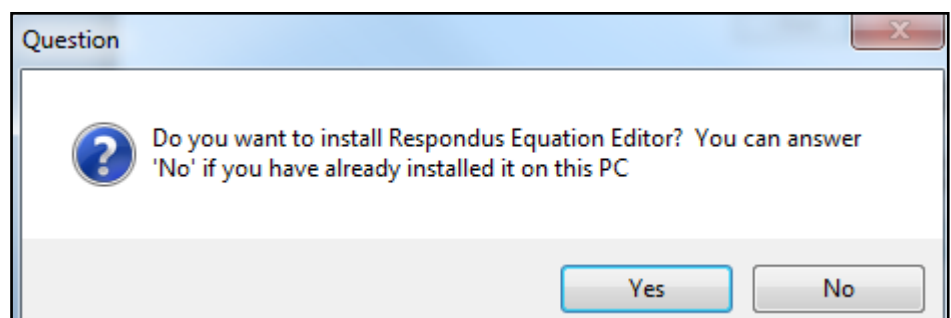
5. Click Next as needed



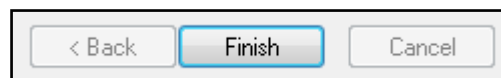
6. Click Install



7. Click Yes for the Equation Editor



8. Click Finish



The **first time you open the application** to use it, you will need to **enter the installation code**. This can be found on the "Installation Instructions" PDF file downloaded from the UConn Software site.

When asked to indicate the **LMS being used**, select **Blackboard 7.x-9.x**