

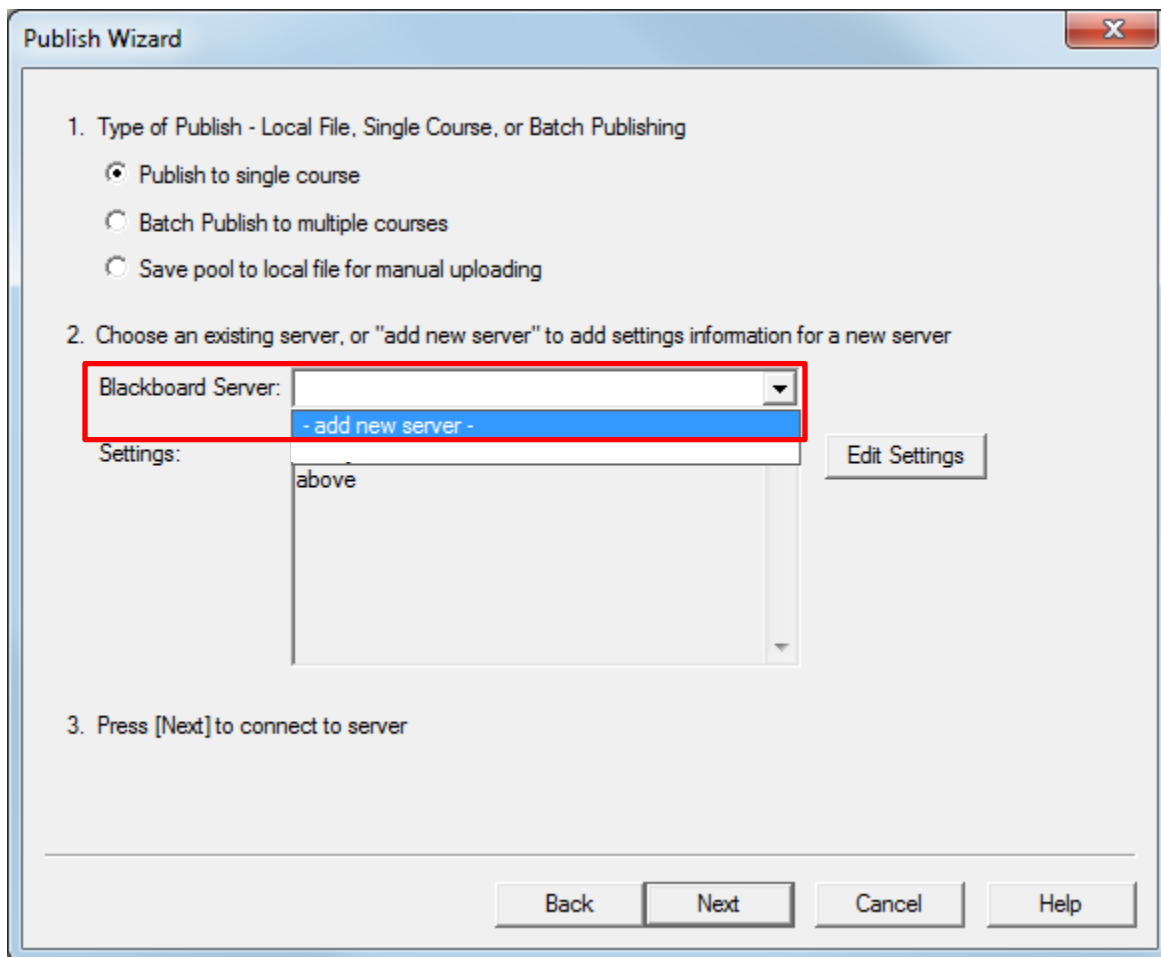
Settings for Respondus Server connection to the HuskyCT system in use during Spring 2015

When using Respondus 4.0 for the first time to publish test to HuskyCT, you need to set up the server connection.

Please use the following steps

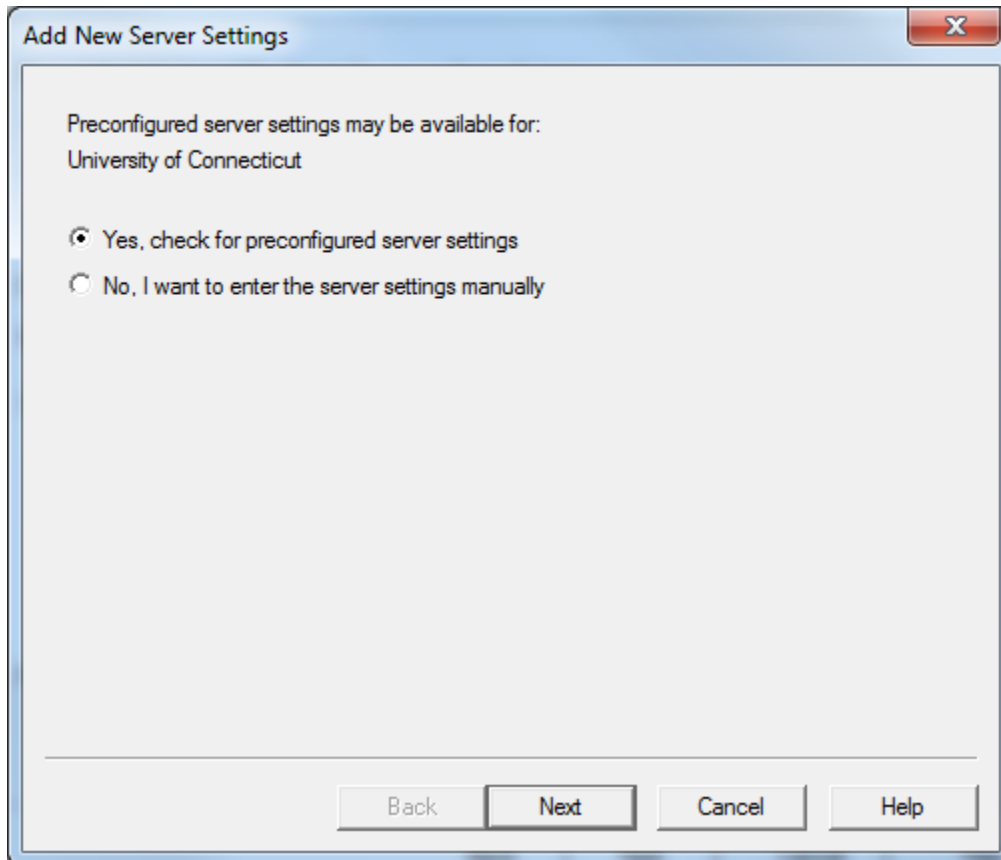
1. When you are ready to publish your test questions you will activate the “Publish Wizard” in Respondus.

This will load the screen shown below. Expand the Blackboard Server Menu and **click on “-add new server-”**



2. On the next screen, you can use **the prefigured settings** as shown below. Click Next.

Please note that these preconfigured settings **ONLY** work with the system running classes in Spring 2015.



3. Fill in a name for the server and enter your NetID and password. If you are doing this on your own computer you can check the box to save your User Name and Password.

Click Next to run the connection test.

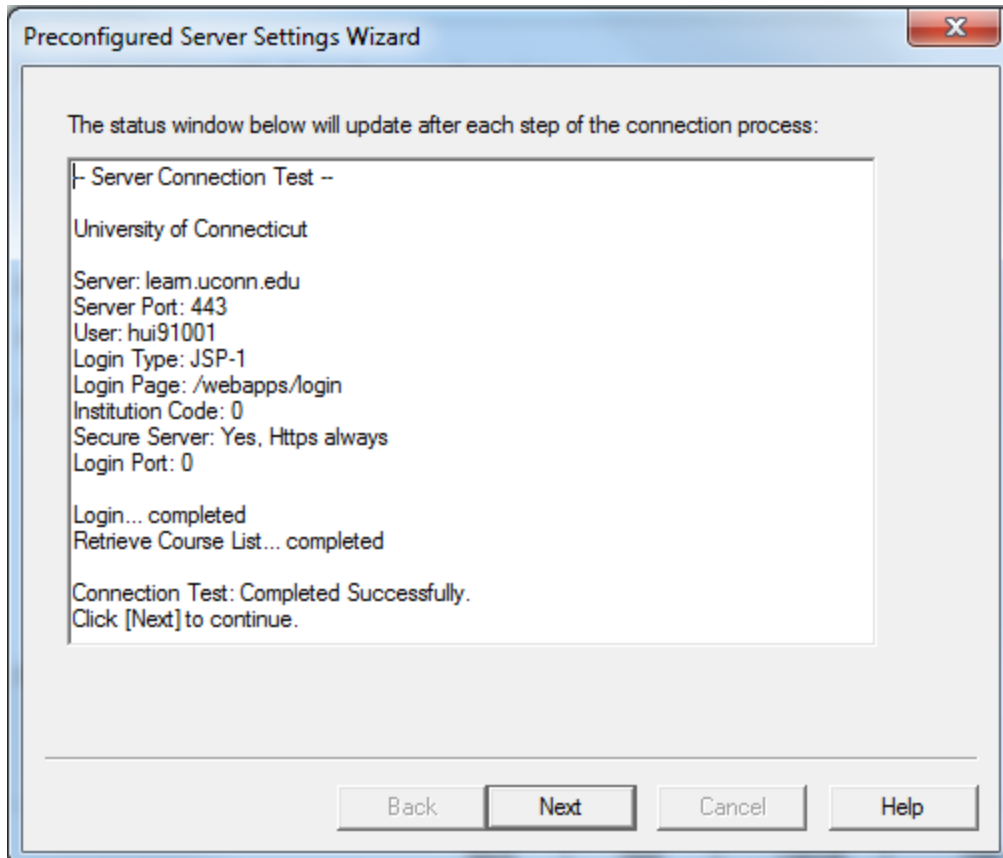
Preconfigured Server Settings Wizard

Success! The server settings have been downloaded for:
University of Connecticut

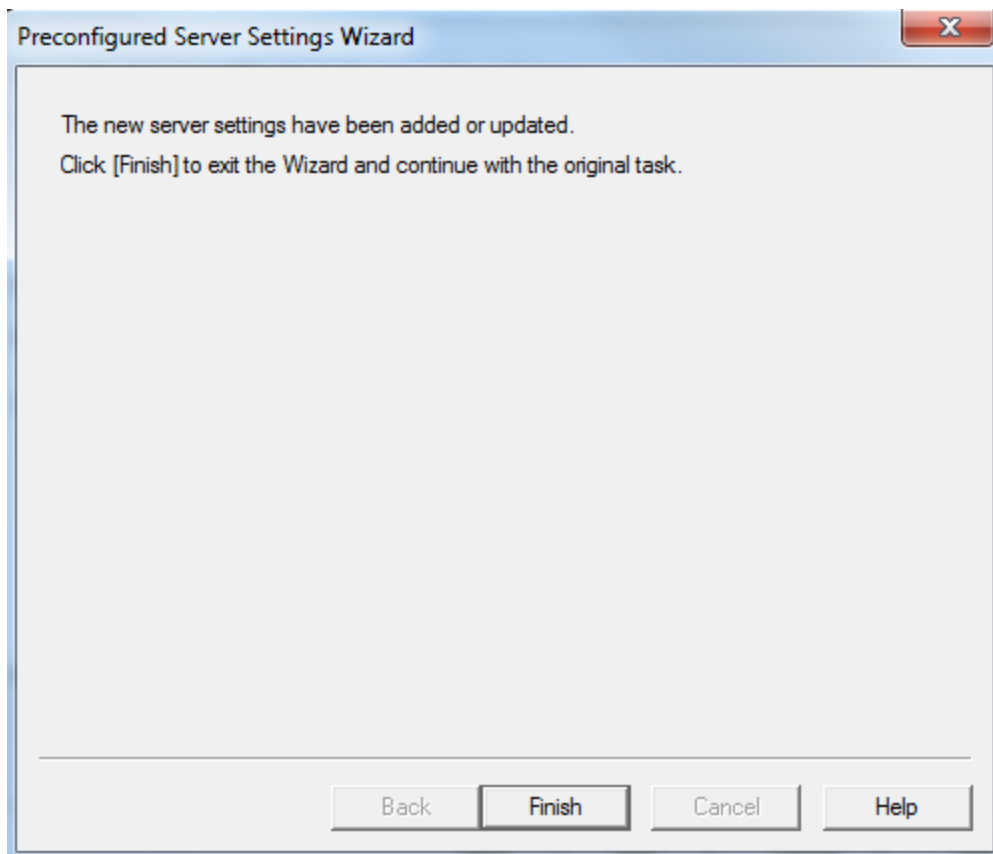
1. Enter a name to describe this Blackboard server (e.g. "My Bb Courses")
2. Enter your login information for this Blackboard server
User name Password
 Save my User Name and Password on this computer.
(If this is a shared computer, don't select this box!)
3. Respondus can run a connection test using the above settings to make sure it can communicate with your online course
 Run connection test
 Skip connection test

Back Next Cancel Help

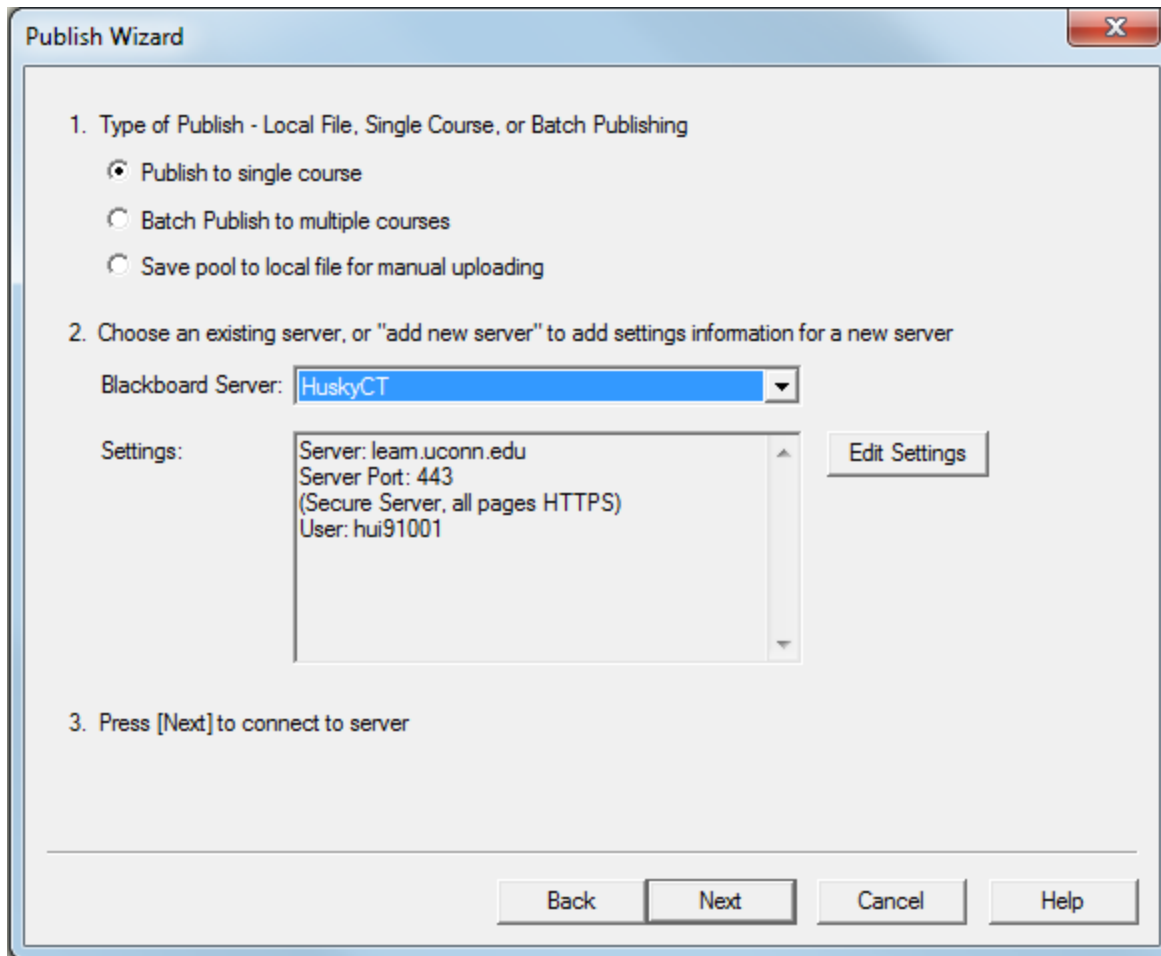
4. The following information will be displayed for a successful connection. Click Next.



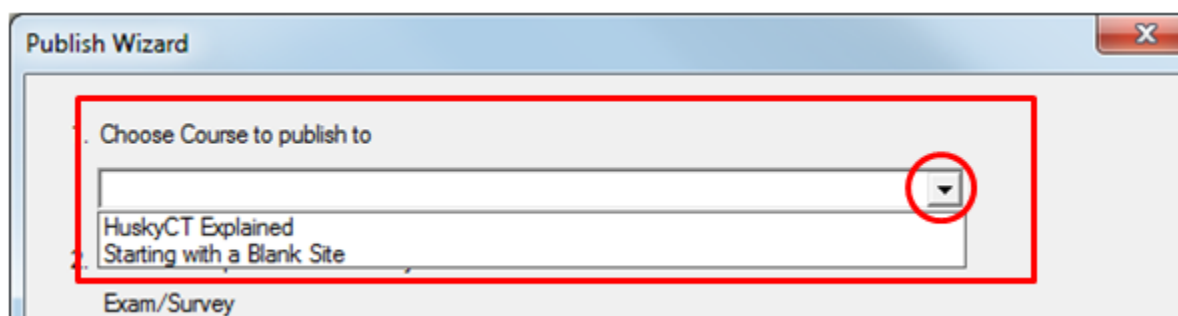
5. When the server setting has been added, you can click Finish.



6. Click Next on the screen that loads.

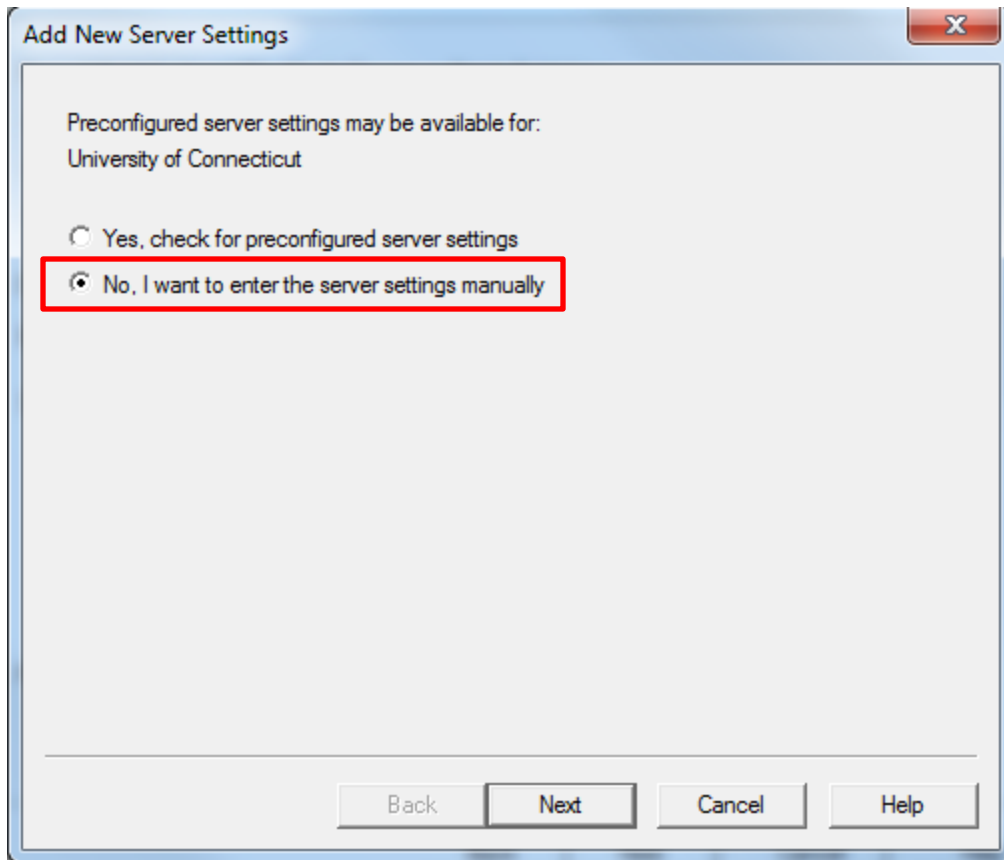


7. Use the dropdown menu to select the HuskyCT site where you wish to publish the test or pool.



ALTERNATIVE METHOD

If you have problems connecting with the preconfigured settings, you can use the manual option as indicated below. Then click on Next.



4. **Fill in the server information *exactly*** as shown below. Then click OK.

Blackboard Server and Course

To automatically set the server information for your institution:

1. Open your browser, go to the Blackboard "Login" page where you type in your name & password, copy the "Address" of the page from the browser to the box below.
(If you type your name & password into a small grey popup window, leave the box blank.)

2. In your browser go to a course you have instructor rights to, then copy the Address into the box below

3. Press Extract

Extract >>

Server name, e.g. "bboard1.univ.edu" Course ID, e.g. "_2_141"
 learn.uconn.edu []

Login type Login page Institution code
 JSP-1 /webapps/login 0

Server Port 443 Secure Server? Yes, HTTPS:// always

Login Port: 0 If HTTPS used only for login, otherwise set to 0

LDAP & Kerberos logins may need to manually set Type=PL-1, Login port= 443

The information below must be entered manually:

Description HuskyCT Version Version 7.x-9.x
 (text to display in the server selection list, e.g. "My Bb server")

User name hui91001 Password xxxxxxxx

Remember my User Name and Password (save them on this computer) --
 If this is a shared computer, un-check this box!

5. **If the connection is successful**, you will be able to use the dropdown menu on the next screen to select the course you wish to publish to.

Publish Wizard

Choose Course to publish to

HuskyCT Explained
 Starting with a Blank Site

Exam/Survey

TROUBLESHOOTING TIP

If you have copied the settings exactly and the connection is not working, and you are getting an error message or not seeing the drop-down menu with your courses, you may need to update your Respondus 4.0 application. This is done by going to the Help menu in Respondus and choosing “Check for Update”.

